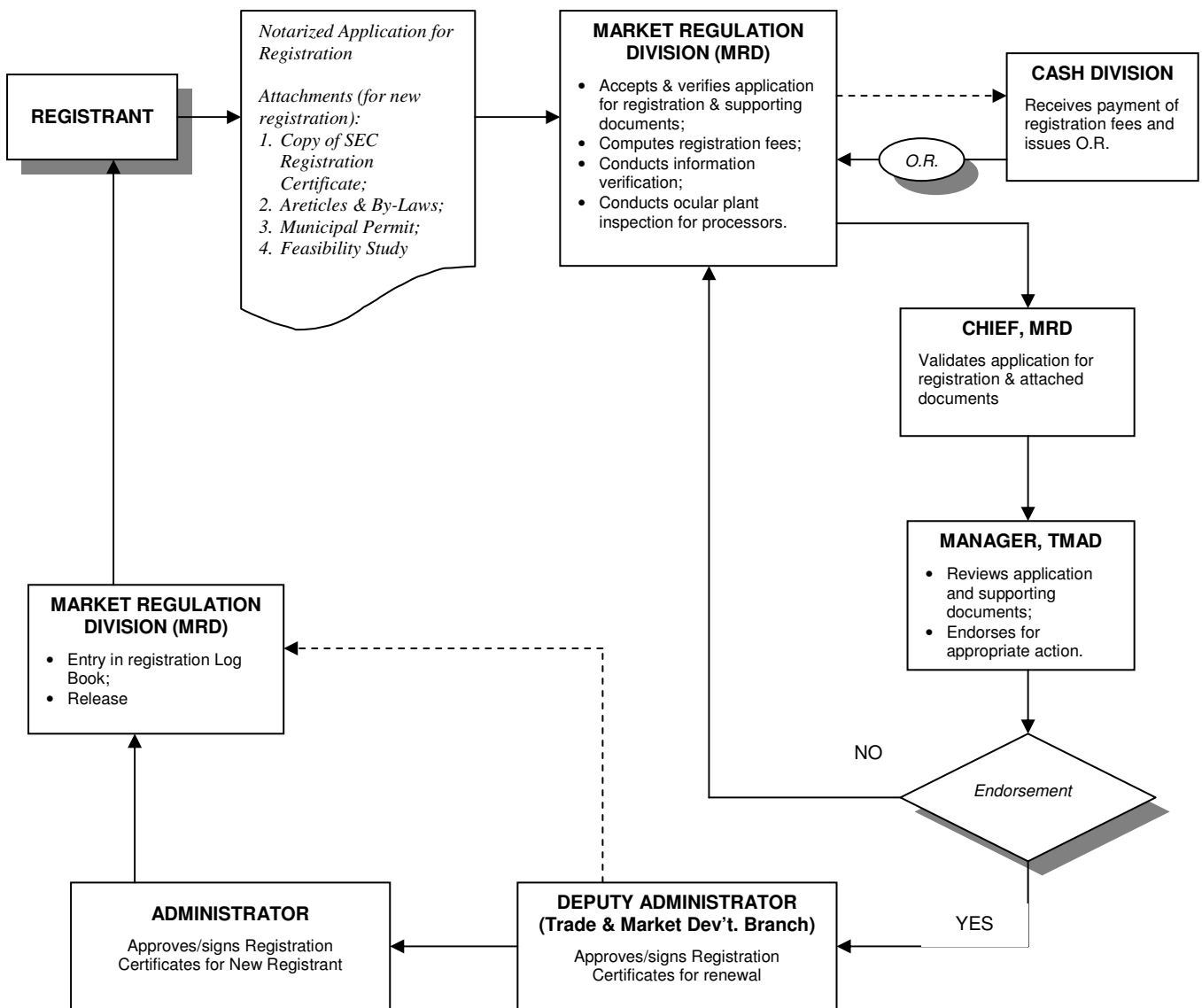


## PCA SIMPLIFIED REGISTRATION PROCEDURE



### WHO ARE COVERED BY PCA REGULATIONS:

Individual or firm engaged in any business activity or operation involving the following coconut products and/or its by-products:

- |  |   |
|--|---|
| 1. Coconut either whole or dehusked nuts;  | 7. Coconut based-chemicals (fatty acid, fatty alcohol, methyl ester, crude/refined glycerine, alkanolamide) |
| 2. Copra;  | 8. Coco Lumber  |
| 3. Desiccated Coconut;   | 9. Coconut Husk   |
| 4. Copra Cake/Meal pellets   | 10. Coconut Coir Fiber  |
| 5. Paring Oil  | 11. Coco Shell Charcoal & Activated Carbon  |
| 6. Coconut Oil (crude, refined/bleached/deodorized, cochin type, acid oil/acidulated soapstocks, hydrogenated oil, degummed/bleached oil); | 12. Coconut-based food/semi-food products with coconut content volume of 60% or over                        |

(NOTE: Please refer to PCA Administrative Order No. 1, series of 1993 for Registration Fees.)

## DOCUMENTARY REQUIREMENTS FOR PCA REGISTRATION

### **I. For Processors of Coconut-based Products**

#### **A. Corporation**

1. Registration Certificate issued by the Securities and Exchange Commission (SEC)
2. Articles of Incorporation and By-laws
3. Municipal permit/license
4. Building plan and permit
5. Feasibility Study

#### **B. Single Proprietorship/Partnership**

1. Registration with the Bureau of Domestic Trade
2. Articles or Contract of Partnership
3. Municipal permit/license
4. Building plan and permit
5. Feasibility Study

### **II. For Exporters/Traders of Coconut-Based Products**

#### **A. Corporation**

1. Registration Certificate issued by the Securities and Exchange Commission (SEC)
2. Articles of Incorporation and By-laws
3. Municipal permit/license

#### **B. Single Proprietorship/Partnership**

1. Registration with the Bureau of Domestic Trade
2. Articles or Contract of Partnership
3. Municipal permit/license

### **III. For Trade Intermediaries**

1. Broker's license
2. Registration with the Bureau of Domestic Trade